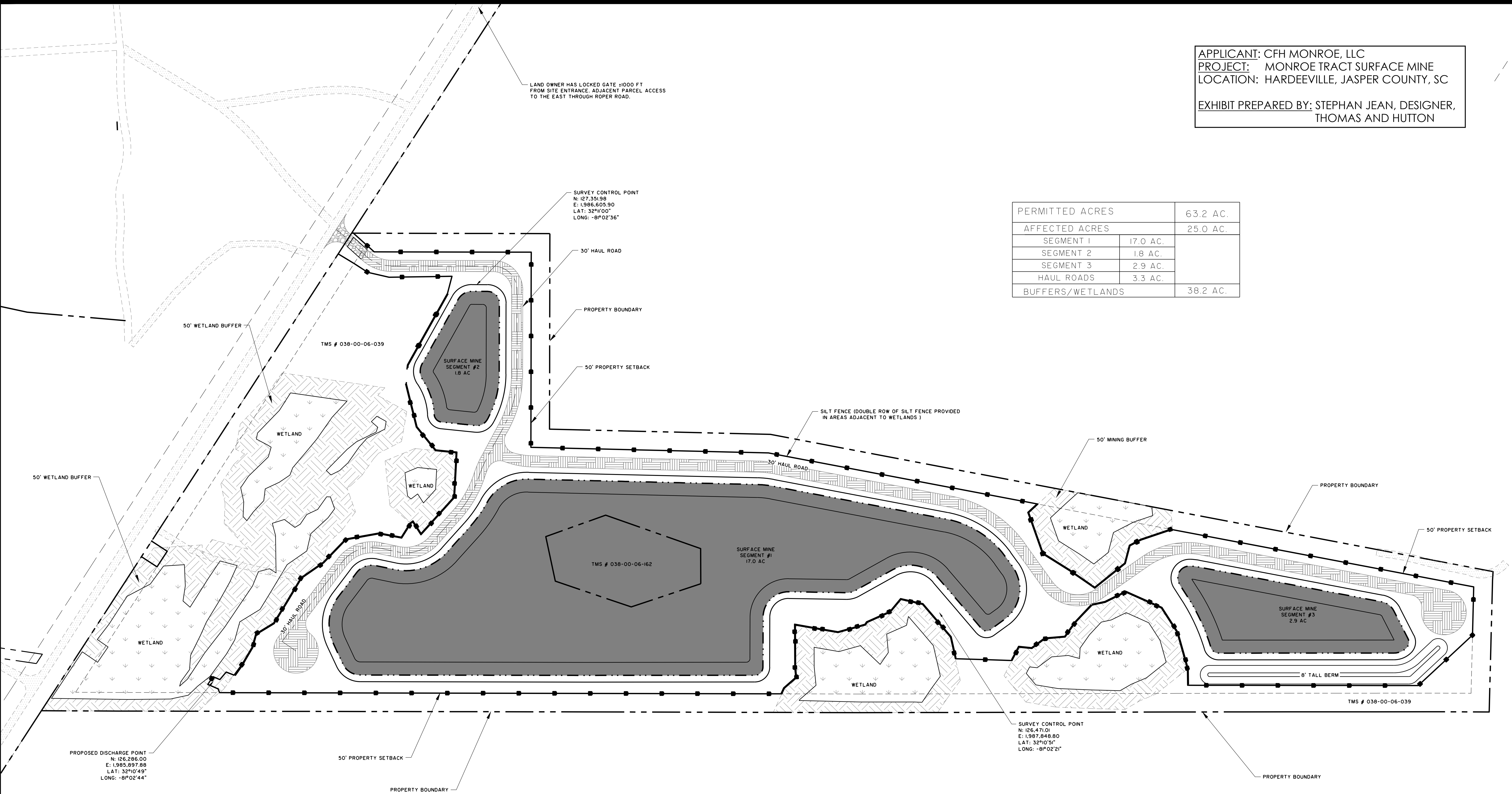


APPLICANT: CFH MONROE, LLC
PROJECT: MONROE TRACT SURFACE MINE
LOCATION: HARDEEVILLE, JASPER COUNTY, SC

EXHIBIT PREPARED BY: STEPHAN JEAN, DESIGNER,
THOMAS AND HUTTON

PERMITTED ACRES		63.2 AC.
AFFECTED ACRES		25.0 AC.
SEGMENT 1	17.0 AC.	
SEGMENT 2	1.8 AC.	
SEGMENT 3	2.9 AC.	
HAUL ROADS	3.3 AC.	
BUFFERS/WETLANDS		38.2 AC.



PREPARED FOR:

OVERALL SAND SURFACE MINE MAP
MONROE TRACT
JASPER COUNTY, SOUTH CAROLINA

OCTOBER 2024

**THOMAS
&
HUTTON**
50 Park of Commerce Way
Savannah, GA 31405 • 912.234.5300
www.thomasandhutton.com

This map illustrates a general plan of the development which is for discussion purposes only, does not limit or bind the owner/developer, and is subject to change and revision without prior written notice to the holder. Dimensions, boundaries and position locations are for illustrative purposes only and are subject to an accurate survey and property description.

COPYRIGHT © 2024 THOMAS & HUTTON

