



March RBC Meeting Highlights

John Boyer, CDM Smith

Agenda Item 3

Water Demand Projection Methodologies

- **Water demand projections** extrapolate a trend, are based on hypothetical scenarios, and aim to be informative.
- Which of the below items were not a driver variable explicitly used in developing the water demand projections?
 - A. Economic growth
 - B. Irrigated acres
 - C. Change in per capita demand
 - D. Population
 - E. Estimated water loss in distribution systems
 - F. Electricity production

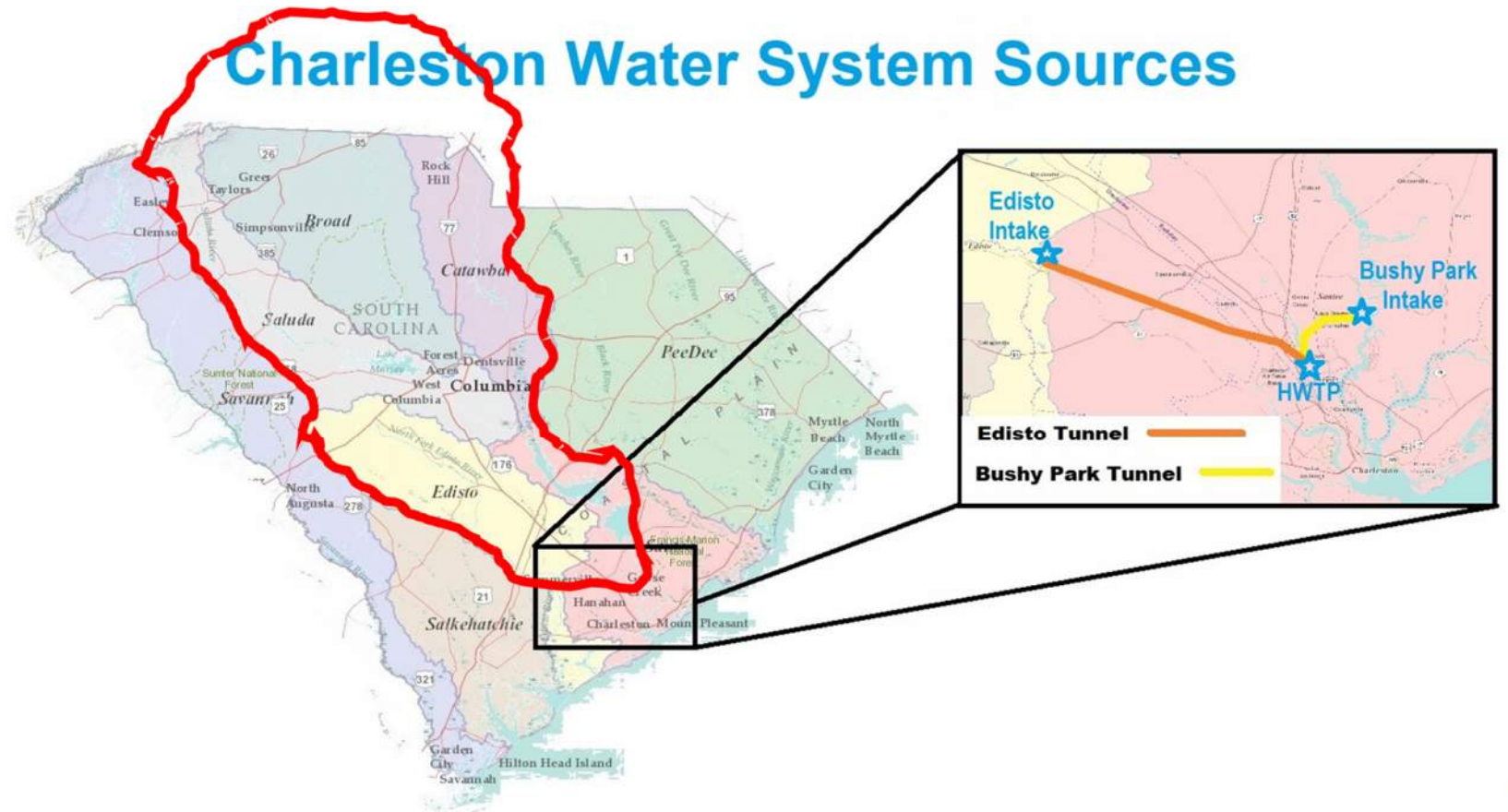
Planning Scenarios

- **Moderate Demand Scenario:** Baseline Demand is based on *monthly median* withdrawal volumes and a "**moderate**" (business-as-usual) growth rate for the Driver Variable.
- **High Demand Scenario:** Baseline Demand is based on *monthly maximum* withdrawal volumes and an "**aggressive**" growth rate for the Driver variable.
- **High Growth Scenario** (*for comparison purposes only*): Baseline Demand is based on *monthly median* withdrawal volumes and an "**aggressive**" growth rate for the Driver Variable (*this scenario is not used in surface water simulations*).

Charleston Water System

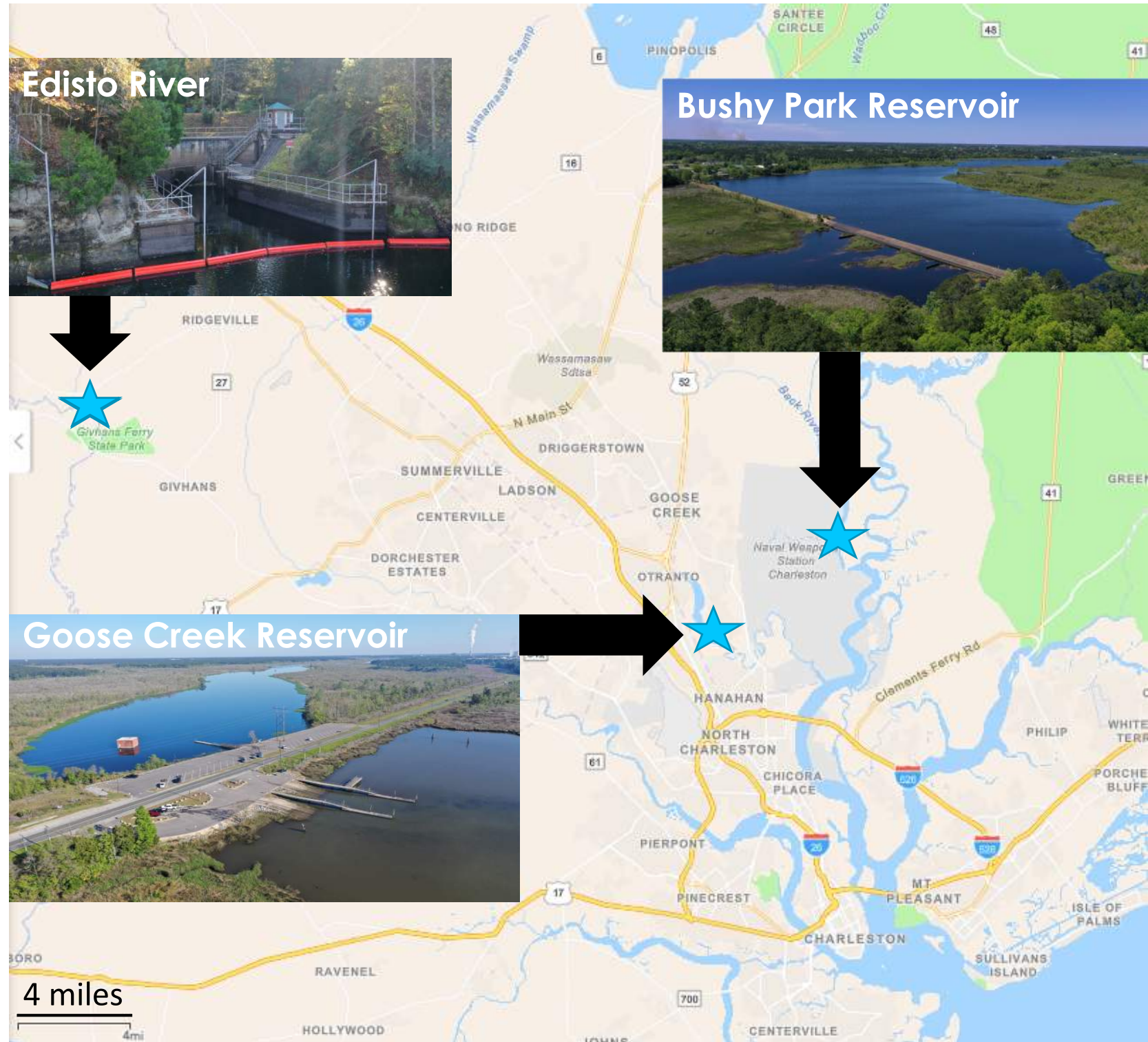
- How large is the source watershed to Charleston Water System's three sources (Edisto River, Bushy Park Reservoir and Goose Creek Reservoir):

- A. 10,000 acres
- B. 100,000 acres
- C. 1,000,000 acres
- D. 10,000,000 acres



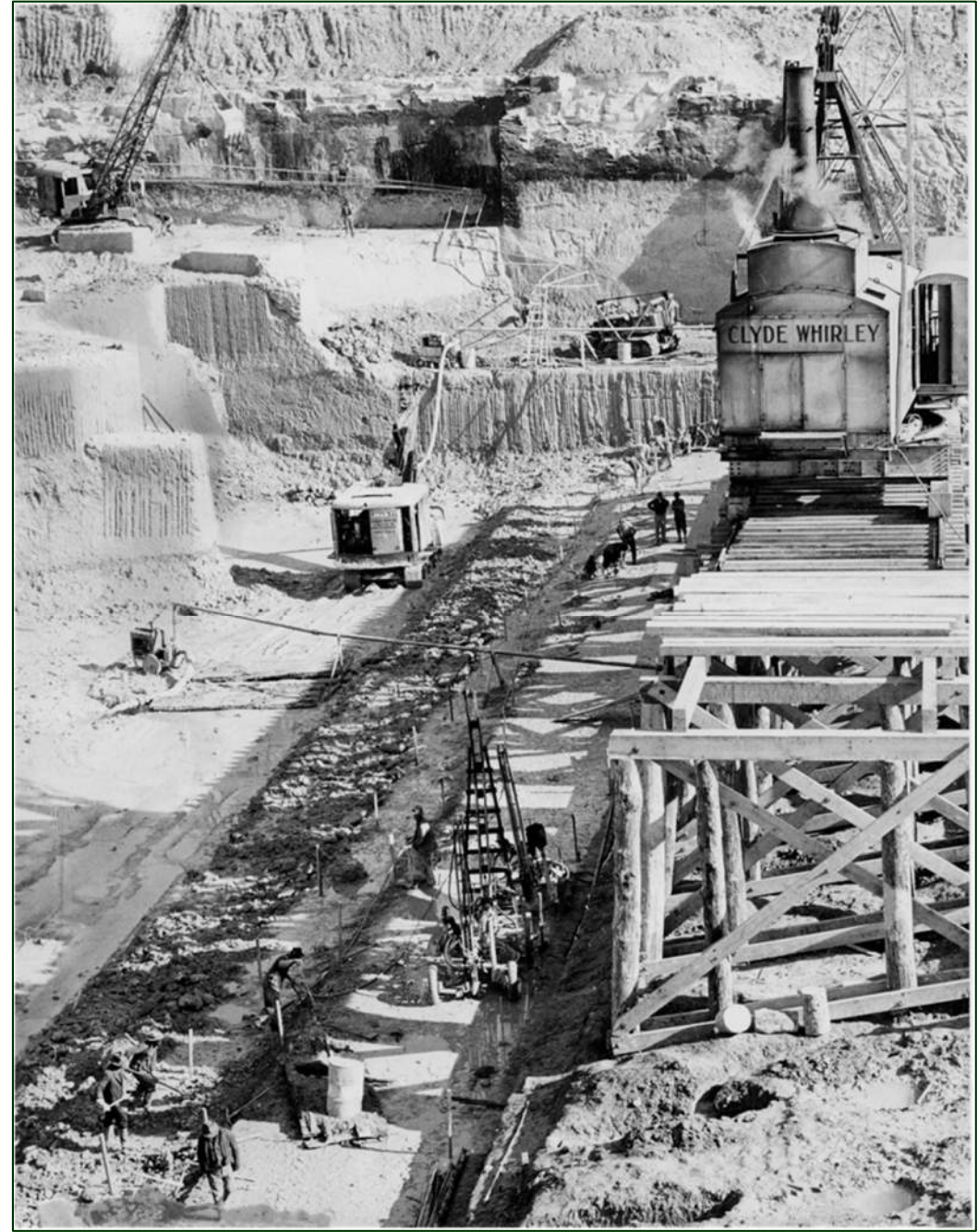
What is Charleston Water Systems Primary Source of Water?

- A. Goose Creek Reservoir
- B. Bushy Park Reservoir
- C. Edisto River
- D. Ashley River



Santee Cooper Project History

- When was construction of the Santee Cooper Project started, and when was power first produced at the Jefferies Hydroelectric Station?
 - A. 1926 and 1934
 - B. 1934 and 1942
 - C. 1939 and 1942
 - D. 1942 and 1950



Santee Cooper Project History

- Santee Coopers 3rd FERC License was approved in 2023 and extends for how many years?
 - A. 25
 - B. 30
 - C. 50
 - D. 75

