

Watershed Evaluation Team (WET)

Formed in May, 2022

It is amazing what you can accomplish if you don't focus on who gets the credit. Partnering brings credit to everyone.

Goals

- Study the Catawba River Basin watersheds. Does not include the Broad River
- Form a cooperative organization focused on studying York County water quality
- Identify pollution sources currently affecting water quality, creek impairment, stormwater issues, pollution impacts
- Establish a baseline of current watershed water quality and condition
- Secure detailed engineering studies of each watershed
- Create watershed studies aligning with the requirements of Federal 319 funding
- Make multiple applications for funding through DHEC/DES or other sources to cover a portion of the cost of the studies
- Find matching funds from the partners to secure the grants

Structure of the WET

- To avoid conflicts between jurisdictions the Board member of DHEC/DES was selected as the Chairman
- The representative from the Council of Governments was the Vice-Chair
- All communications were shared with all members, regardless of their financial participation
- Periodic meetings were held at different locations. The meetings were held monthly during organizing and then roughly quarterly afterwards
- The Chairman did minutes of the meetings
- Rock Hill served as the aggregator of recommendation letters, billing, proposal preparation, proposal submittal, contracting entity for engineering services

The Team



Examples of impaired creeks

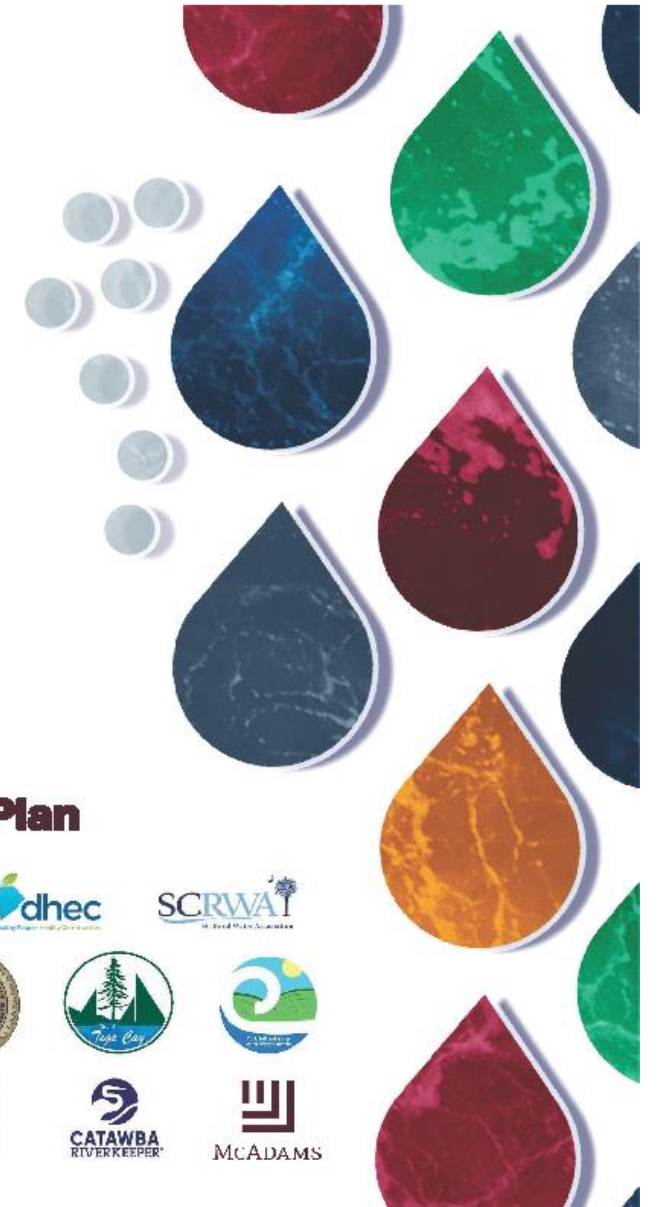


Approach to Cooperative Progress

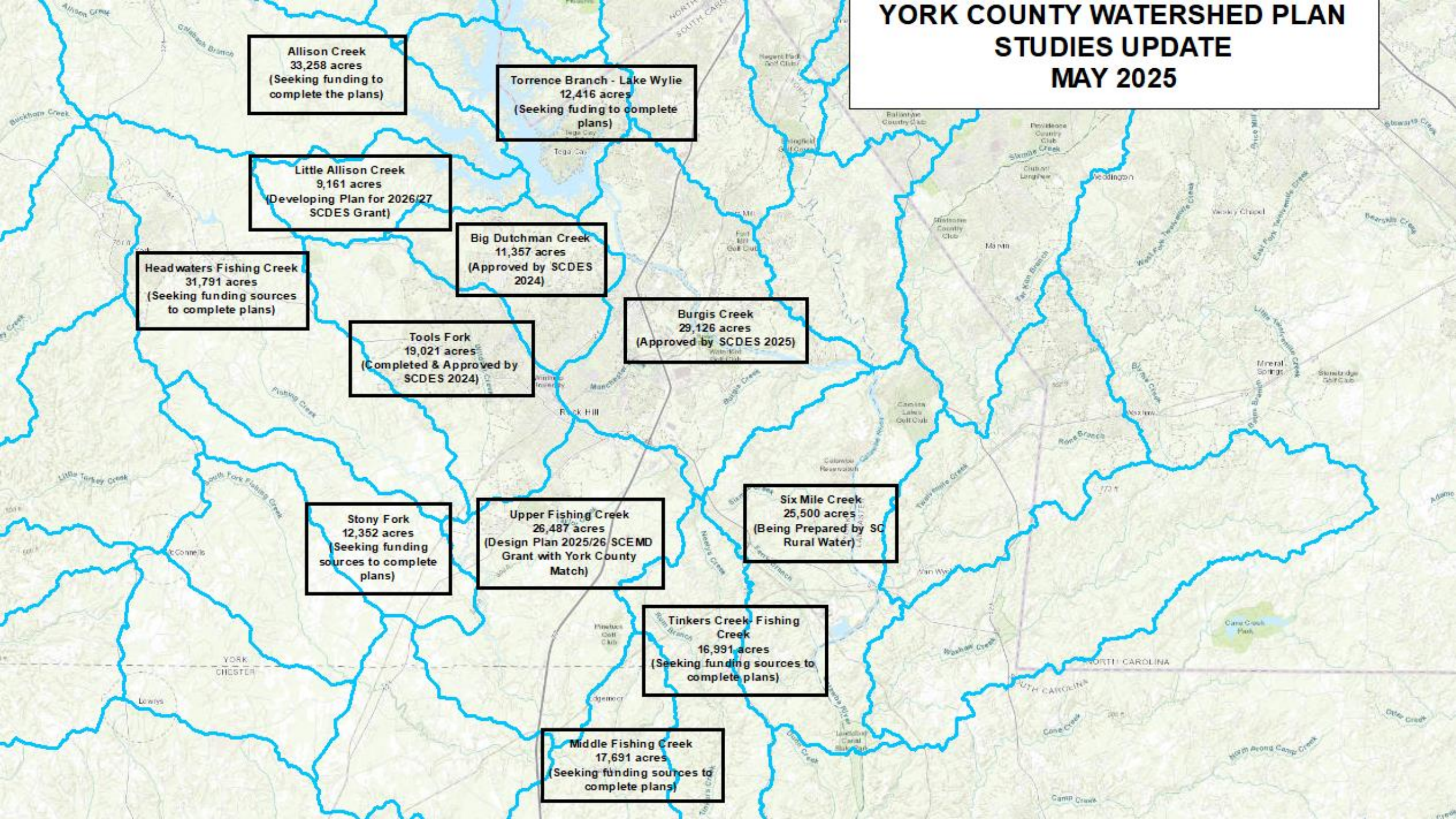
- No political leaders at the table for planning
- Jurisdictions responsible to help finance studies only in the areas over which they have control
- All parties contribute letters of support for grants
- Costs for studies forward loaded in jurisdiction budgets
- Regular briefings of jurisdiction managers and elected officials
- Active participation by residents of the watersheds
- Jurisdictions had the option to opt out of funding studies
- Include other stakeholders – Riverkeeper, Businesses

List of Watersheds Included in the Program

- Fishing Creek
- Tools Fork
- Big Dutchman Creek
- Burgis Creek
- Little Allison Creek
- Upper Fishing Creek
- 6 Additional watersheds over the next 3 years



YORK COUNTY WATERSHED PLAN STUDIES UPDATE MAY 2025



Watershed Plans Grant Funding Sources

- Big Dutchman Creek & Burgis Creek—SCDHEC \$96,460
- Tools Fork Creek—City of Rock Hill Community Development Block Grant (CDBG) \$26,161
- Upper Fishing Creek—SC Emergency Management Dept. \$66,938
- Little Allison Creek—SCDES \$100,000 April 2026

Total Received: \$289,559

Total Area completed/in progress by 2027 will be approximately 95,161 Acres

Watershed Plans Matching Funding from Jurisdictional Partners

- Big Dutchman Creek—City of Rock Hill \$23,363
- Burgis Creek—York County \$8,750, Tega Cay \$1,600, Fort Mill \$13,664, Catawba Nation \$800, City of Rock Hill \$23,363
- Tools Fork Creek—City of Rock Hill \$53,839
- Upper Fishing Creek—York County \$24,513
- Little Allison Creek—no match required
- Six (6) future watersheds—York County committed up to \$90,000 & Tega Cay currently undetermined

Watershed Plans Developed

- Big Dutchman Creek—11,358 Acres--Approved 2024
- Burgis Creek—29,129 Acres—Approved 2025
- Tools Fork Creek—19,023 Acres—Approved 2024
- Upper Fishing Creek—26,488 Acres—Under Development (2026 Approval)
- Little Allison Creek—9,163 Acres—Under Development (2026-27 design, 2027 Approval Date) \$100K SCSRF Grant

Total Area under study or completed by 2007 - 148 sq miles

Future Watershed Plans—Seeking Future Funding

- Allison Creek—33,265 Acres
- Headwaters Fishing Creek—31,795 Acres
- Middle Fishing Creek—17,690 Acres
- Stony Creek—12,353 Acres
- Tinkers Creek—16,991 Acres
- Torrence Branch-Lake Wylie—12,419 Acres

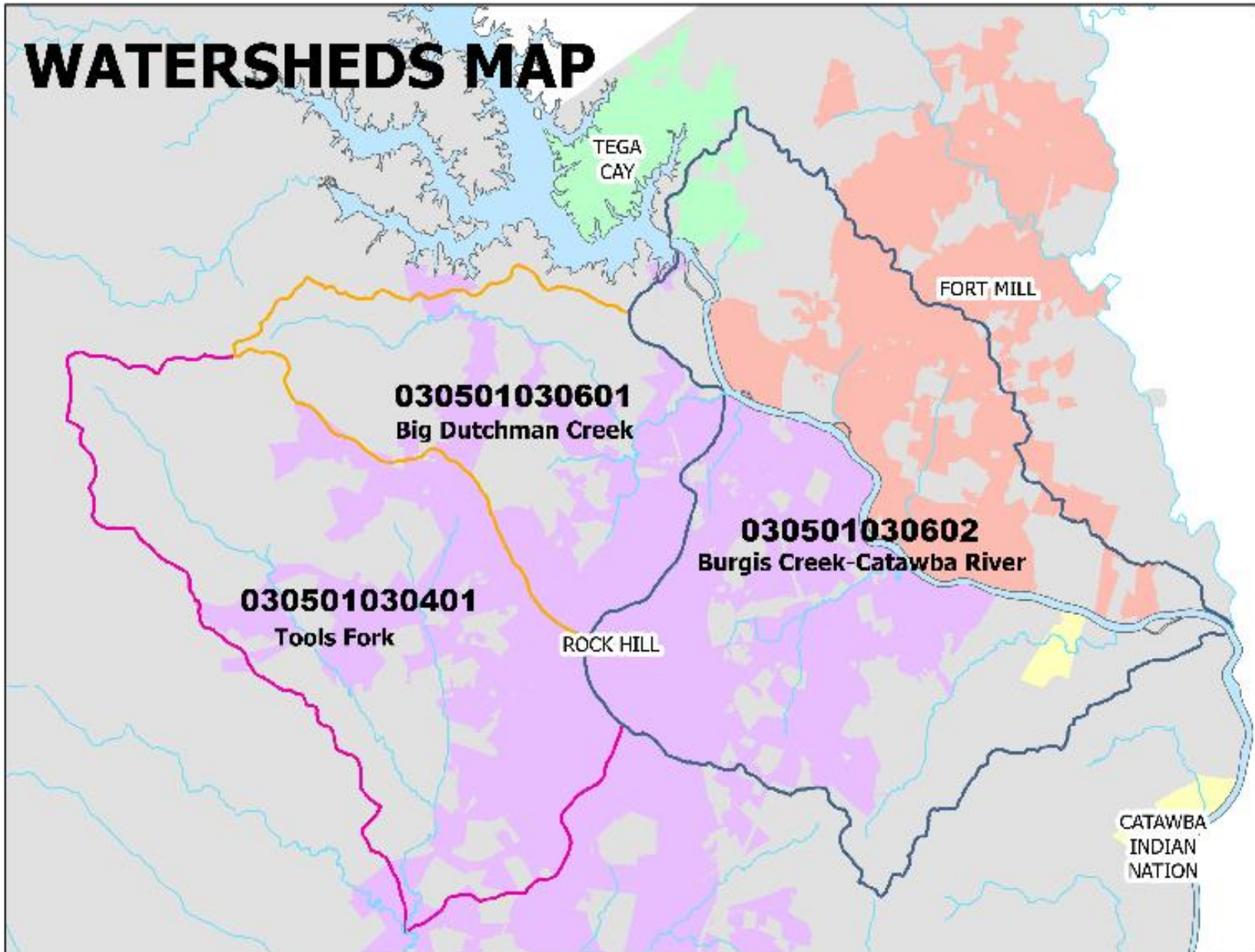
Total Funds Needed to complete above plans approximately \$604,800

Total Area to be Studied is approximately 124,513 Acres

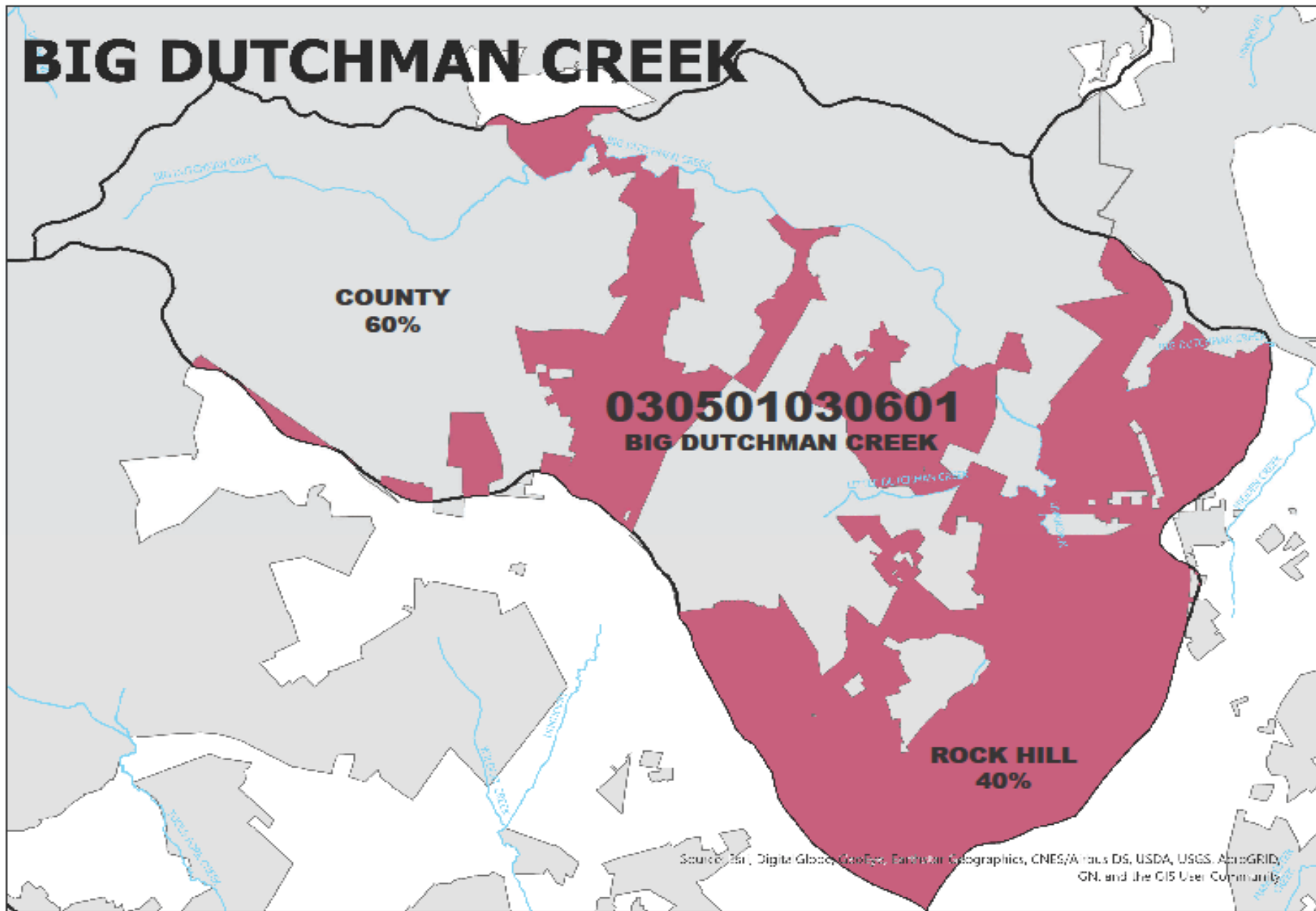
Initial Estimate Breakdown of Match Funds Required

Approximate Study Cost per Watershed									\$80,000	
	BIG DUTCHMAN		BURGIS		TOOLS FORK			Total %Area	Approximate Cost	
	%Area	Cost	%Area	Cost	%Area	Cost				
Catawba Nation	0.00%	\$-	1.00%	\$800.00	0.00%	\$-		0.33%	\$800.00	
City of York	0.00%	\$-	0.00%	\$-	0.00%	\$-		0.00%	\$-	
Fort Mill	0.00%	\$-	22.00%	\$17,600.00	0.00%	\$-		7.33%	\$17,600.00	
Rock Hill	40.00%	\$32,000.00	32.00%	\$25,600.00	43.00%	\$34,400.00		38.33%	\$92,000.00	
Tega Cay	0.00%	\$-	2.00%	\$1,600.00	0.00%	\$-		0.67%	\$1,600.00	
York County	60.00%	\$48,000.00	43.00%	\$34,400.00	57.00%	\$45,600.00		53.33%	\$128,000.00	
								100.00%	\$240,000.00	

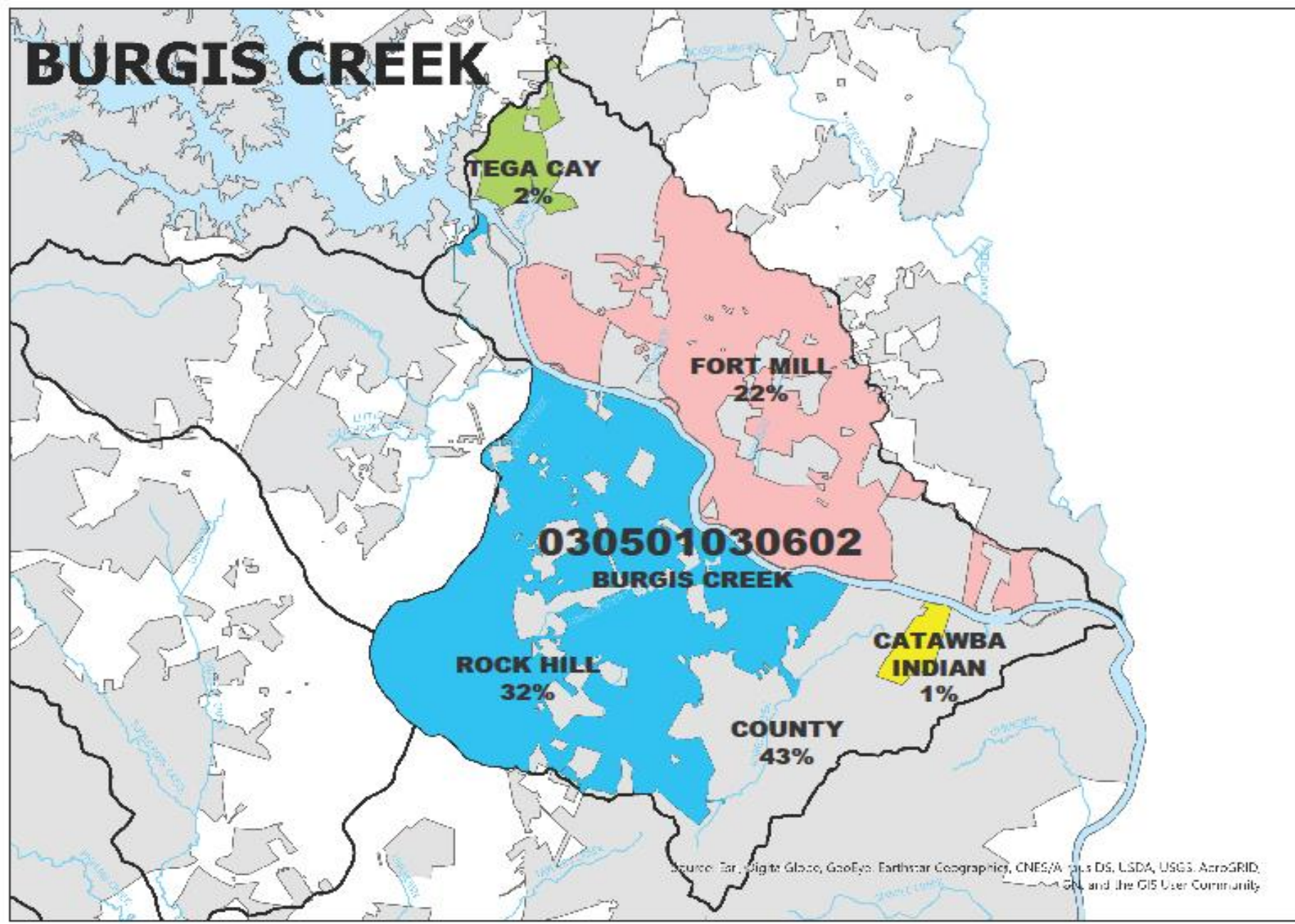
WATERSHEDS MAP



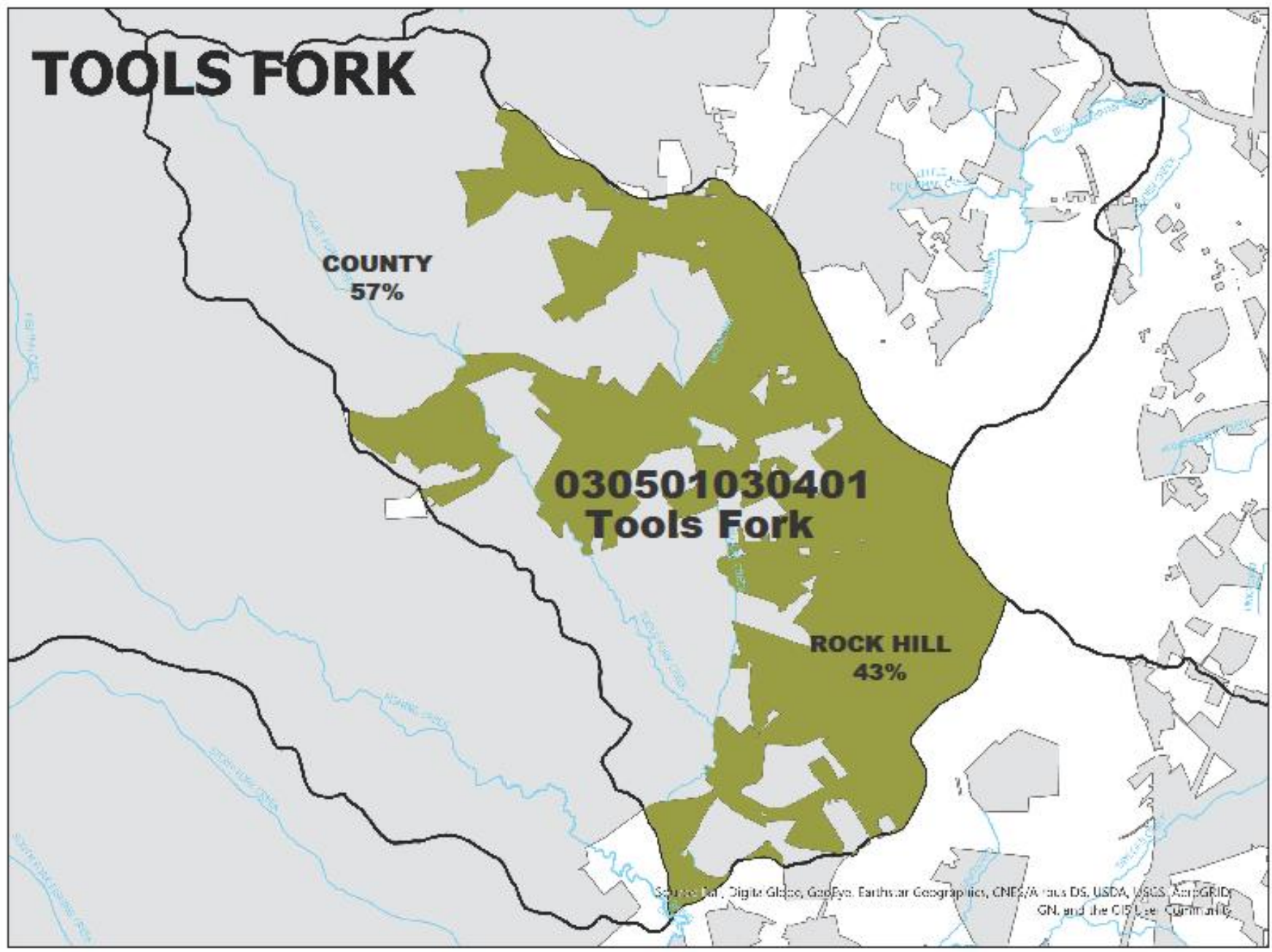
BIG DUTCHMAN CREEK

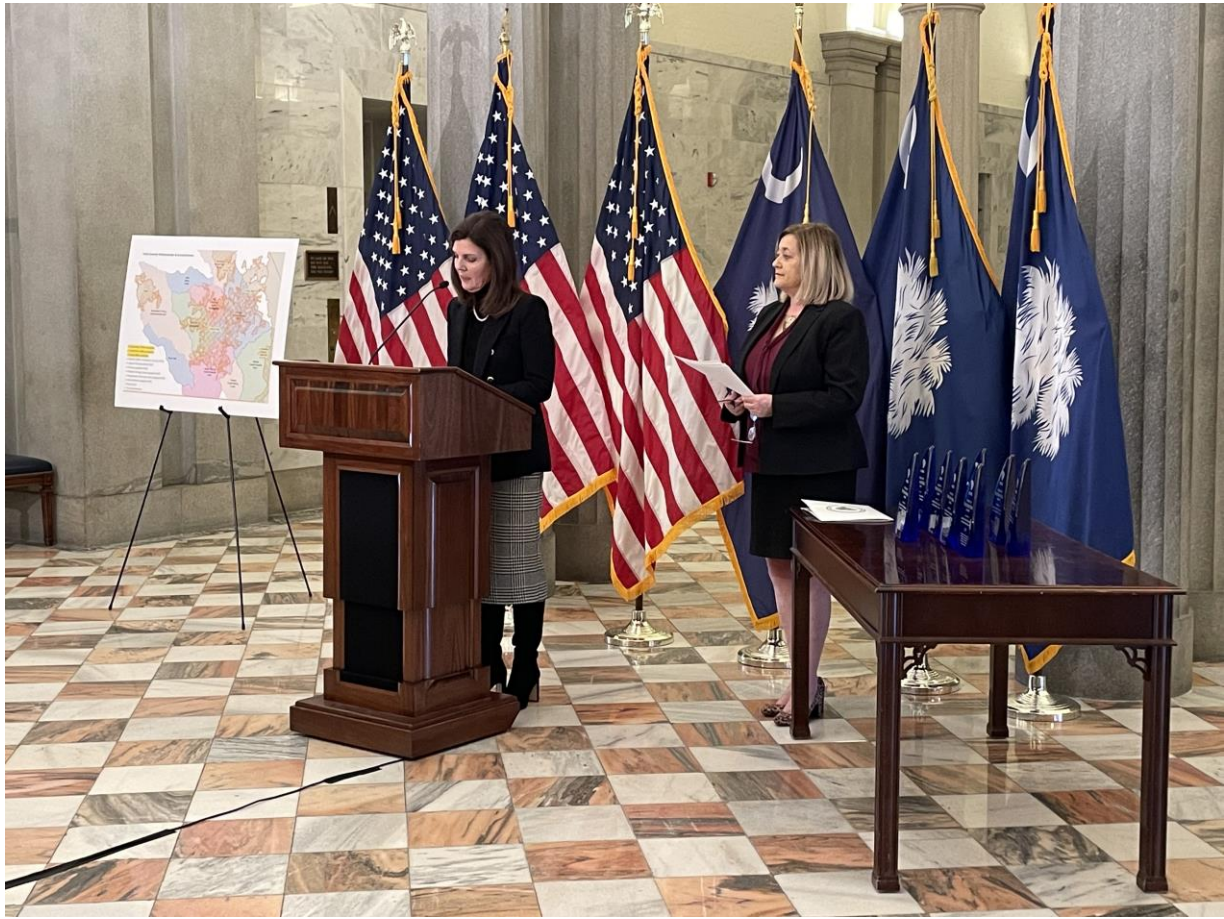


BURGIS CREEK



Source: Esri, DigitalGlobe, GeoEye, Earthstar Geographics, CNES/Airbus DS, USDA, USGS, AeroGRID, IGN, and the GIS User Community





DES, Myra Reece, and the Lieutenant Governor, Pamela Evette, awarded the members and leads the “SCDES Power of Partnerships Award” in the Capital Building in Columbia



Conclusion

- True partnerships produce great results
- We enjoyed cooperation from all members
- Most successful multi-jurisdictional effort of this type in SC
- Received the “Power of Partnership Award” from DES and the Lt. Gov
- The program continues to expand and has lasted longer than we expected. Will have another meeting of the members next month for an update
- 245,000 acres are in the program
- Nearly \$500,000 has been committed to date
- It has been a great experience for everyone who was part of the program

*The WET group and Watershed Plans have both been mentioned in Hazard Mitigation Grant Program (**HMGP**), FEMA Building Resilient Infrastructure and Communities (**BRIC**), and other grant applications since being organized.*