



# GLAD JIBS

Witty Word Games  
About Protecting South Carolina's  
Environment



---

Visit [des.sc.gov/earthday](https://des.sc.gov/earthday)  
for more information and resources.

---





**Earth Day**  
SOUTH CAROLINA

# GLAD JIBS

Witty Word Games  
About Protecting South Carolina's  
Environment



SC DEPARTMENT of  
**ENVIRONMENTAL  
SERVICES**

Presented by the  
S.C. Department of Environmental Services (SCDES)  
Environmental Outreach Committee

# EARTH DAY

Earth Day is held every year on \_\_\_\_\_ .

DATE

It's the day when millions of \_\_\_\_\_

PLURAL NOUN

across the world come together to promote a cleaner, safer

\_\_\_\_\_. Senator Gaylord Nelson of

NOUN

\_\_\_\_\_ is considered the

STATE

\_\_\_\_\_ of Earth Day. Nelson's idea

NOUN

evolved over a \_\_\_\_\_ year period beginning in

NUMBER

\_\_\_\_\_ and resulted in the first Earth Day

YEAR

being held on April 22, 1970. The first Earth Day drew together

more than \_\_\_\_\_ Americans and became

NUMBER

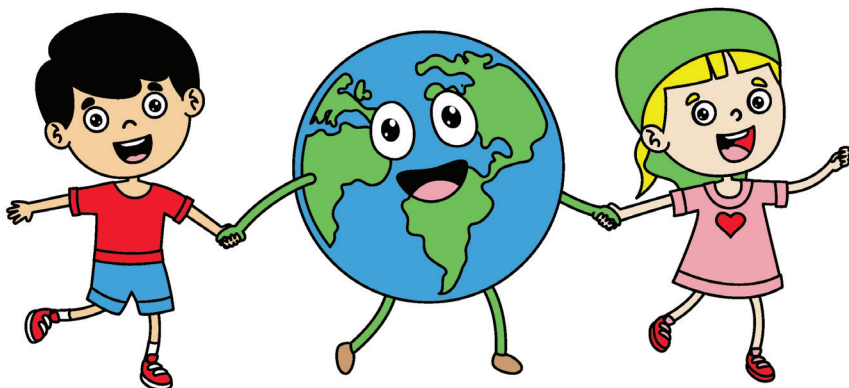
the largest grassroots demonstration in \_\_\_\_\_

COUNTRY

history. Participants took to the \_\_\_\_\_ ,

PLURAL NOUN

lobbied Congress and began the modern environmental movement.



# NATURAL RESOURCES

The earth is the source of natural resources. The air we \_\_\_\_\_, food we

\_\_\_\_\_, clothes we \_\_\_\_\_ and houses we

\_\_\_\_\_ in come from these resources. We must use

them \_\_\_\_\_. The earth contains many minerals.

To get them, we must dig into the ground. This is called mining.

Did you know that \_\_\_\_\_ has more than

\_\_\_\_\_ mines? One of them is a \_\_\_\_\_

mine! Common minerals mined in \_\_\_\_\_

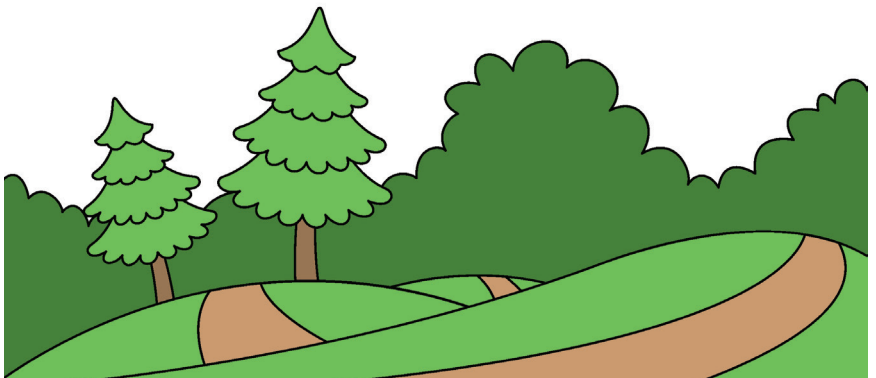
include sand and sand/clay, clay, gold, granite, kaolin, limestone

and vermiculite. These minerals are made into glass for

\_\_\_\_\_, bricks for \_\_\_\_\_,

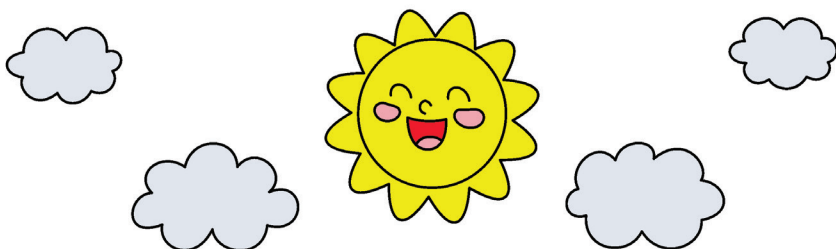
gravel for \_\_\_\_\_ and more.

\_\_\_\_\_



# AIR POLLUTION

It can affect our health and our environment. We can all  
do our part to help \_\_\_\_\_ air pollution and  
\_\_\_\_\_ **VERB**  
\_\_\_\_\_ our health. Turning off your \_\_\_\_\_  
\_\_\_\_\_ **VERB** \_\_\_\_\_ **NOUN**  
while waiting in the \_\_\_\_\_ line instead of idling  
\_\_\_\_\_ **NOUN**  
saves \_\_\_\_\_ and \_\_\_\_\_ air  
\_\_\_\_\_ **NOUN** \_\_\_\_\_ **VERB**  
pollution. “Idling” means that a vehicle’s \_\_\_\_\_  
\_\_\_\_\_ **NOUN**  
is turned on but the vehicle is not in motion. The \_\_\_\_\_  
\_\_\_\_\_ **NOUN**  
can have a direct effect on air quality. The \_\_\_\_\_,  
\_\_\_\_\_ **NOUN**  
\_\_\_\_\_, air \_\_\_\_\_ and \_\_\_\_\_  
\_\_\_\_\_ **NOUN** \_\_\_\_\_ **NOUN** \_\_\_\_\_ **NOUN**  
can affect how much pollution is in the air we \_\_\_\_\_.  
\_\_\_\_\_ **VERB**



# WATER POLLUTION

Rain water on the \_\_\_\_\_ picks up  
NOUN  
pollutants, then flows into storm drains (grated openings near  
street curbs). Storm drains \_\_\_\_\_ this  
VERB  
“polluted runoff” through \_\_\_\_\_ beneath  
NOUN  
the \_\_\_\_\_. Some of these underground pipes lead to  
NOUN  
\_\_\_\_\_, \_\_\_\_\_, and even the \_\_\_\_\_.  
PLURAL NOUN PLURAL NOUN NOUN

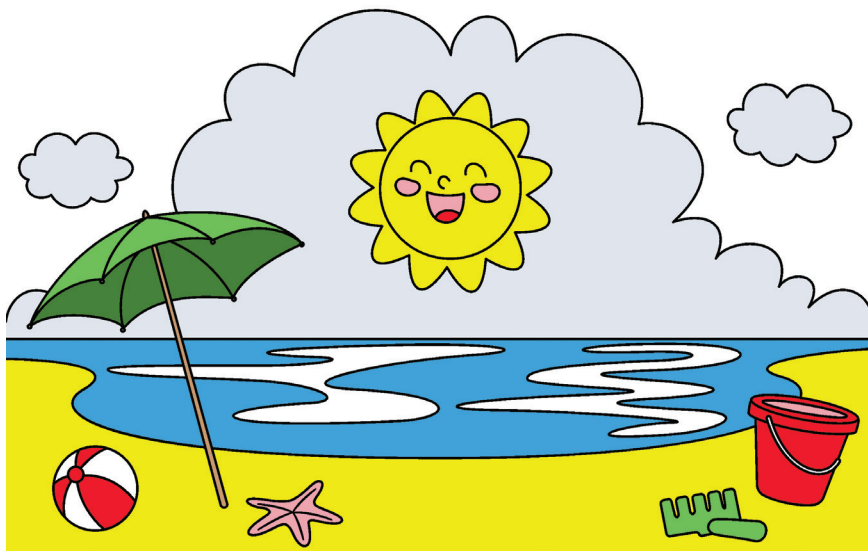
Other runoff seeps directly into the ground. Only \_\_\_\_\_  
NUMBER  
percent of the water on earth is \_\_\_\_\_. More than  
ADJECTIVE  
\_\_\_\_\_ percent of it is \_\_\_\_\_  
NUMBER ADJECTIVE  
at the North and South Poles. We all share less than \_\_\_\_\_  
NUMBER  
percent of all the \_\_\_\_\_ water on the planet.  
ADJECTIVE  
There are \_\_\_\_\_ forms of water. In  
NUMBER  
\_\_\_\_\_ form we know water as rain or tap water.  
ADJECTIVE

In \_\_\_\_\_ form, it is ice. As a  
ADJECTIVE  
\_\_\_\_\_, we call it vapor.  
NOUN



# KEEP BEACHES CLEAN!

The beach is a fun place to \_\_\_\_\_  
VERB  
and is home to \_\_\_\_\_  
PLURAL NOUN  
Some of them mistake \_\_\_\_\_ for  
NOUN  
food and become \_\_\_\_\_ after  
ADJECTIVE  
eating it. That's why it's \_\_\_\_\_  
ADJECTIVE  
to clean up all the \_\_\_\_\_ from the  
NOUN  
beach after a day of \_\_\_\_\_ and  
NOUN  
\_\_\_\_\_. Leave only \_\_\_\_\_  
NOUN PLURAL NOUN  
in the sand.





# RECYCLE RIGHT SC

Recycling is saving items like \_\_\_\_\_, \_\_\_\_\_  
\_\_\_\_\_ and \_\_\_\_\_  
\_\_\_\_\_ so they can be \_\_\_\_\_  
\_\_\_\_\_ into new products. But placing the wrong items into the  
\_\_\_\_\_ can contaminate all  
the collected material. That's why it's important to recycle  
\_\_\_\_\_. Rinse aluminum, glass and plastic  
\_\_\_\_\_. Empty and  
\_\_\_\_\_ cardboard boxes. Never put  
\_\_\_\_\_ into your recycling bin. Only recycle  
\_\_\_\_\_ items that your local \_\_\_\_\_ accepts.



# RESOURCES

## EARTH DAY

[des.sc.gov/earthday](https://des.sc.gov/earthday)

## SCDES

[des.sc.gov](https://des.sc.gov)

## AIR QUALITY

[des.sc.gov/programs/BAQ](https://des.sc.gov/programs/BAQ)

## WATER

[des.sc.gov/programs/BOW](https://des.sc.gov/programs/BOW)

## LAND & WASTE MANAGEMENT

[des.sc.gov/programs/BLWM](https://des.sc.gov/programs/BLWM)

## COASTAL MANAGEMENT

[des.sc.gov/programs/BCM](https://des.sc.gov/programs/BCM)







# CELEBRATE EARTH DAY!



SC DEPARTMENT of  
**ENVIRONMENTAL  
SERVICES**